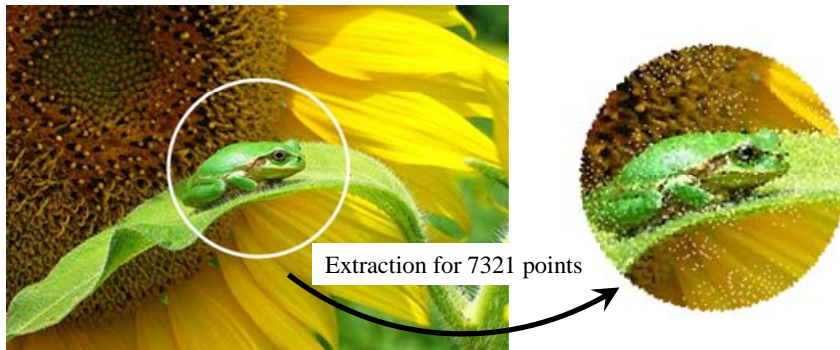


# Wanted Students & Researchers

(Example Area of Study)

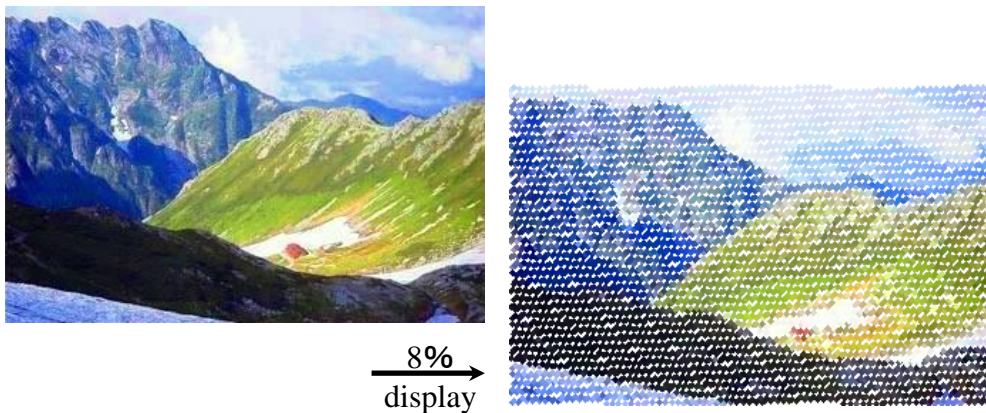
[Fibonacci spiral and form]

- ⌘ Prevention of Moiré
- ⌘ Randomly sampling by using Fibonacci spiral



<http://kobe-mari.maxs.jp/nanko/himawari.htm>

- ⌘ Speed up to information transfer



- ⌘ Generation of Fibonacci number
- ⌘ Fringe generation of an animal and the form of a wing, and etc.

## [Science on Form]

Researching “forms” would give us important clues to discover “laws” as Mendel discovered *Mendel’s law* by paying closer attention to “round” or “wrinkled” seeds.

[X-ray diffraction]

- ⌘ Diffraction enhanced imaging (DEI)



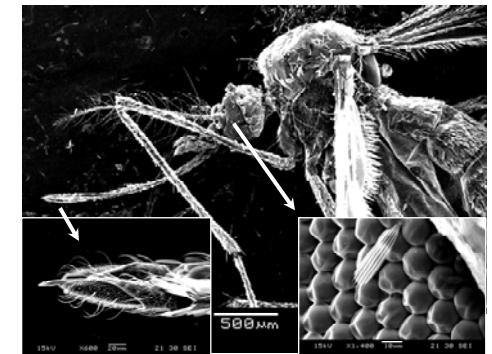
- ⌘ X-ray topography



Defect image of GaAs crystal

[ Scanning  
Electron Microscope ]

- ⌘ Analysis by using  
Electron beam



SEM images for Mosquito

(Research Environment)

- ⌘ Personal computer per person
- ⌘ Coa2Duo processor and parallel computing system
- ⌘ java system and it’s utilization
- ⌘ Mathematica 7.0

Negishi laboratory  
+81-48-585-6304, E-mail: [negishi@sit.ac.jp](mailto:negishi@sit.ac.jp)  
<http://www.sit.ac.jp/user/negishi>